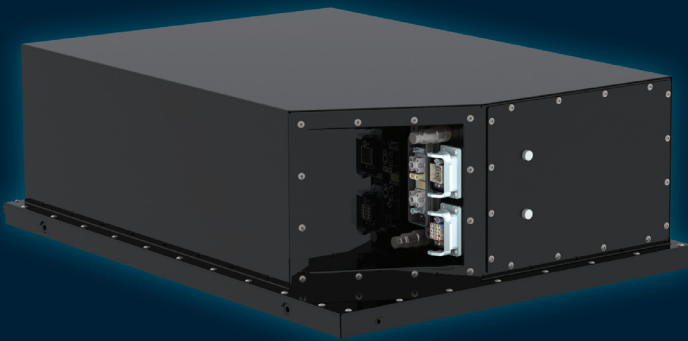


UVES Power Gen 2.0

Battery Pack LTO 15,2 kWh

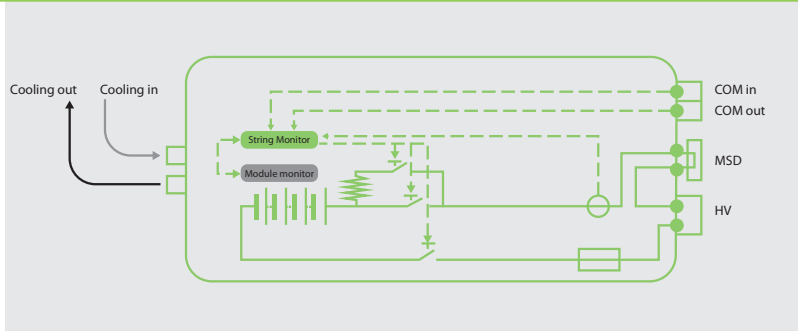


- Lithium-ion technology LTO
- High power and longlife solution (for hybrid and fuelcell vehicle)
- Modularity
- Designed for bus application and commercial vehicle
- 288s1p cells configuration
- Thermal Management System
- Homologated: UN ECE R100.02 and UN ECE R10.06



Parameters

Operating conditions of Battery Pack	
	288s1p
Discharge Current Continuous	92 A
Discharge Current Maximum	184 A
Discharge Ambient Temp. Range	-30°C to 55°C
Charge Current Continuous	92 A
Charge Current Maximum	184 A
Charge Ambient Temp. Range	0°C to 55°C
Protection class	IP 67
Thermal Management System	Liquid cooling
Homologation	UN ECE R10.06 UN ECE R100.02
Precharge circuit	YES V

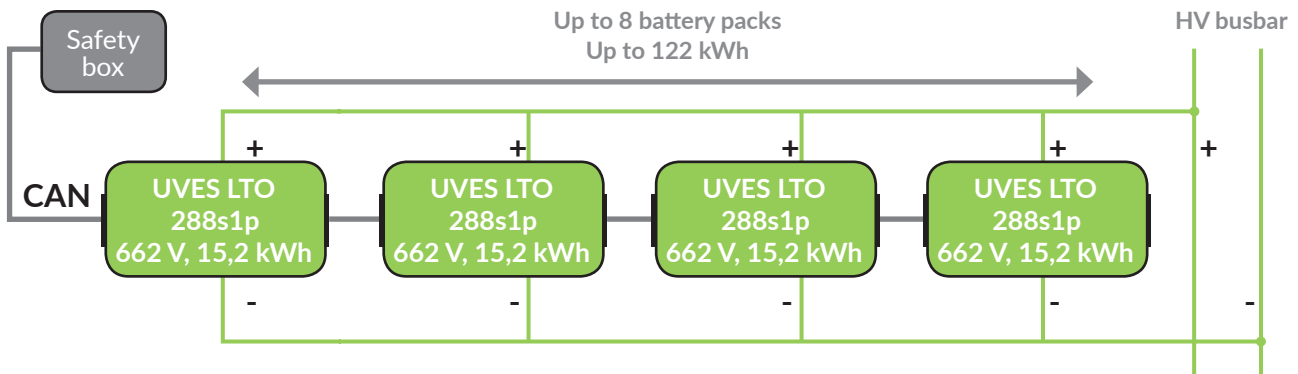


Battery Pack (single container) Configuration					
Cells config.	Voltage			Capacity	Energy
	Min.	Nom.	Max.		
288s2P	576 V	662 V	778 V	23 Ah	15,2 kWh*

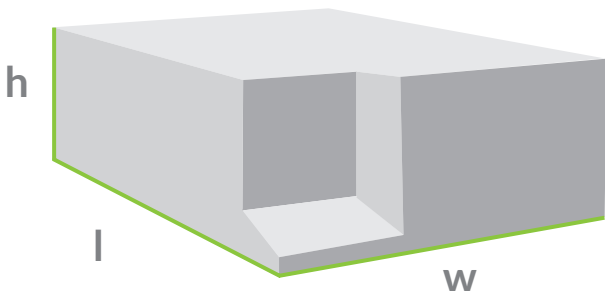
System configurations (examples)				
	Voltage	Capacity	Charge/discharge current continuous	Energy
x2 battery packs in parallel	662 V	46 Ah	184 A / 184 A	30,4 kWh*
x4 battery packs in parallel	662 V	92 Ah	368 / 368	60,8 kWh*
x6 battery packs in parallel	662 V	138 Ah	552 A / 552 A	91,2 kWh*

*usable 80%

Example of system configuration



Mechanical parameters



Dimensions l x w x h	1054 x 769 x 340 mm
Weight	268 kg

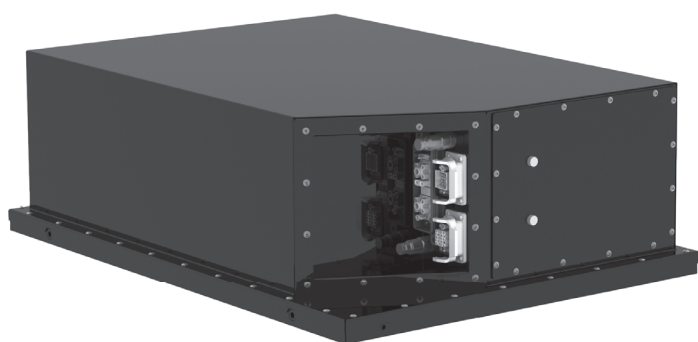
www.icpt.pl

Impact Clean Power Technology S.A.
Al. Jerozolimskie 424 A , 05-800 Pruszków, Poland
phone: +48 22 758 68 65
e-mail: info@icpt.pl, www.icpt.eu

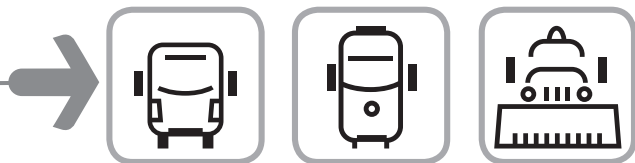
IMPACT

UVES Power Gen 2.0

Battery Pack LTO 15,2 kWh

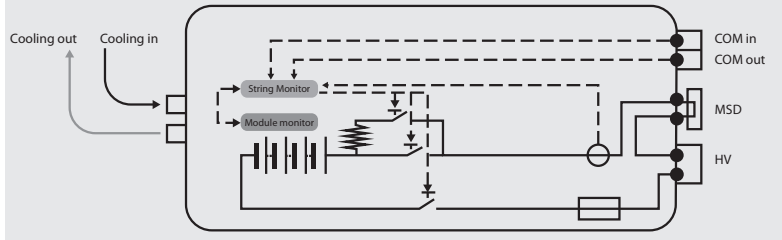


- Lithium-ion technology LTO
- High power and longlife solution (for hybrid and fuelcell vehicle)
- Modularity
- Designed for bus application and commercial vehicle
- 288s1p cells configuration
- Thermal Management System
- Homologated: UN ECE R100.02 and UN ECE R10.06



Parameters

Operating conditions of Battery Pack	
	288s1p
Discharge Current Continuous	92 A
Discharge Current Maximum	184 A
Discharge Ambient Temp. Range	-30°C to 55°C
Charge Current Continuous	92 A
Charge Current Maximum	184 A
Charge Ambient Temp. Range	0°C to 55°C
Protection class	IP 67
Thermal Management System	Liquid cooling
Homologation	UN ECE R10.06 UN ECE R100.02
Precharge circuit	YES V

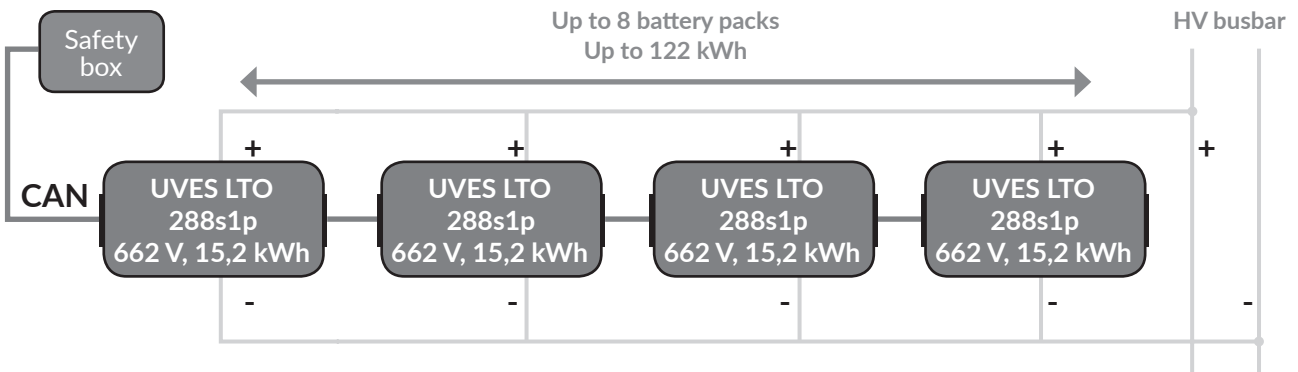


Battery Pack (single container) Configuration					
Cells config.	Voltage			Capacity	Energy
	Min.	Nom.	Max.		
288s2P	576 V	662 V	778 V	23 Ah	15,2 kWh*

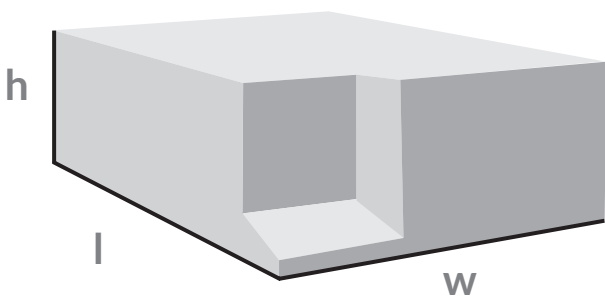
System configurations (examples)				
	Voltage	Capacity	Charge/discharge current continuous	Energy
x2 battery packs in parallel	662 V	46 Ah	184 A / 184 A	30,4 kWh*
x4 battery packs in parallel	662 V	92 Ah	368 / 368	60,8 kWh*
x6 battery packs in parallel	662 V	138 Ah	552 A / 552 A	91,2 kWh*

*usable 80%

Example of system configuration



Mechanical parameters



Dimensions l x w x h	1054 x 769 x 340 mm
Weight	268 kg

www.icpt.pl

Impact Clean Power Technology S.A.
Al. Jerozolimskie 424 A , 05-800 Pruszków, Poland
phone: +48 22 758 68 65
e-mail: info@icpt.pl, www.icpt.eu

